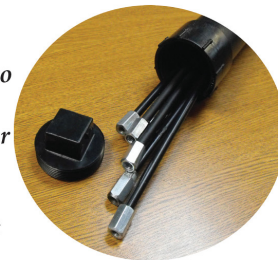


VIS ~mini~ CAM

Quick Start Instructions

NOTE: All batteries must be fully charged overnight before use.

1. The VIS mini CAM and its accessories are in a Black Instrument Case while the Insertion Rods are in a 2" x 34" round PVC carrier (Quiver) with a screw on cap and handle.
2. The inspection can be viewed and recorded with either a Laptop PC using the USB adapter or the optional 5" Monitor with built in Receiver.
 - The 5" Monitor can be used with either the built in battery or the included AC adapter.
 - Turn it on by holding the "M" button on top, be sure it is on "CH-1" for viewing.
 - If a Laptop will be used, IT MUST HAVE THE DRIVERS AND SOFTWARE INSTALLED BEFORE USE.
 - Insert the included disc into your CDROM/DVDROM.
 - Open "READ FIRST! Drivers and Software Install Manual" and follow the directions outlined in the document.
 - Mute your sound while using the VIS mini CAM please.
3. The Camera Head has a threaded coupler for the Insertion Rods.
 - Each Rod is 2.5 feet long and the VIS mini CAM comes with 10 rods.
 - Attach a rod to the camera head.
 - Be sure the rod is attached firmly to the camera head, but do not over tighten.
4. Plug in the 32 ft wire to the Camera Head and the Transmitter Box if it is not already connected.
5. Turn ON (1) the Power switch on the "Transmitter and Battery Box" and be sure the Blue light is lit on the top of the box AND the white LED's are lit on the Camera head.
6. Turn on the PC with USB adapter or the 5" Monitor or BOTH.
 - Be sure you see an image from the camera before inserting the camera into the ducts.
 - The USB adapter will record stills and video on the Laptop, the 5" monitor requires a micro SD card (TF) 1-32 GB (Air-Care has an optional 8 GB card for 7 hours of recording). The TOP LEFT button will start the recording on the 5" Monitor when Held down for several seconds. A short push of that button takes a still picture and saves it to the Micro SD card.
7. Using one or two of the 2.5 foot section of Insertion Rod, slowly push the camera into the duct. You can rotate the rods and bend it side to side to help work the camera into the duct. Always rotate clockwise to prevent the camera head and rods from loosening.



Air-Care[™]
INDOOR AIR QUALITY SPECIALISTS

DPL Enterprises Inc.
3868 E. Post Rd.
Las Vegas, NV 89120
www.Air-Care.com
800-322-9912

MADE IN THE
USA
★ ★
PT#MM0195

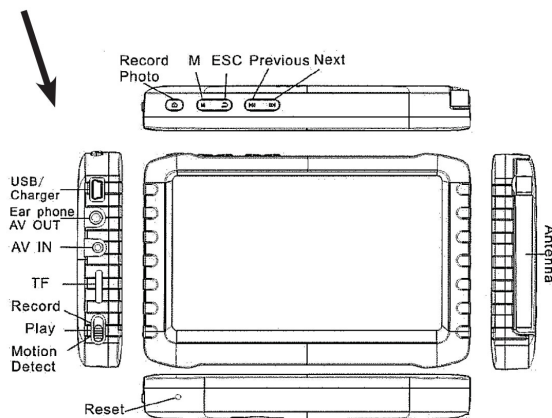
VIS ~mini~ CAM

Quick Start Instructions

8. Continue adding rods as necessary until you can go no further into the duct.
9. To keep your recordings short, just VIEW the inspection while inserting the camera into the duct, then start recording as you bring the camera out of the duct.
10. It is often helpful to write the name and location of the home and the duct on a piece of paper and photograph it with the camera to identify the inspection video later.
11. Verify that the inspection was recorded before packing up the camera.
12. Clean off the camera head and store all of the parts in their bags.

Detailed operating instructions for the 5" monitor are in the booklet included with it.
The USB Adapter Instructions with its software are on the USB Adapter Revised Install CD.

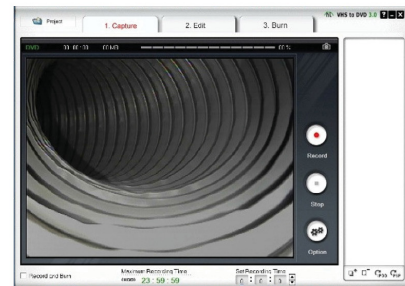
Controls on the optional 5" monitor with receiver and DVR. Recording videos or stills requires an optional micro SD card.



Tips for symbols



Screen Shot of PC with the USB receiver and DVR installed and ready to record. The USB adapter cannot be used until the driver and software are loaded on your PC.



Air-Care
INDOOR AIR QUALITY SPECIALISTS

DPL Enterprises Inc.
3868 E. Post Rd.
Las Vegas, NV 89120
www.Air-Care.com
800-322-9912

MADE IN THE
USA
PT#MM0195