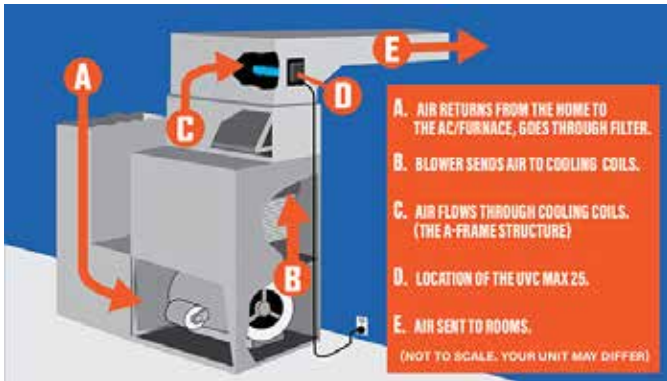


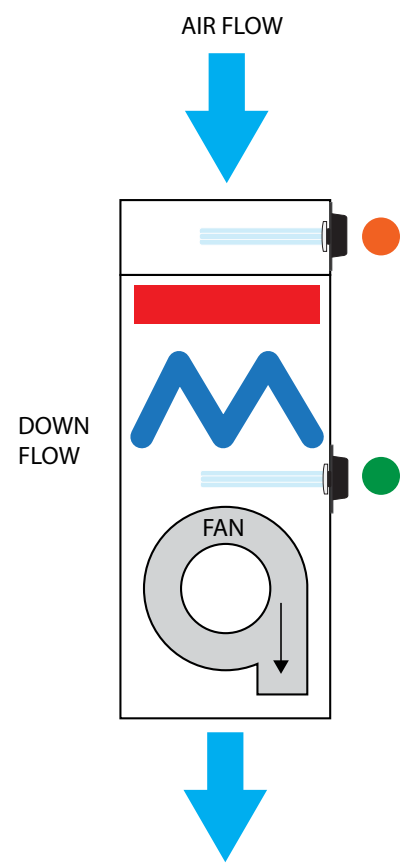
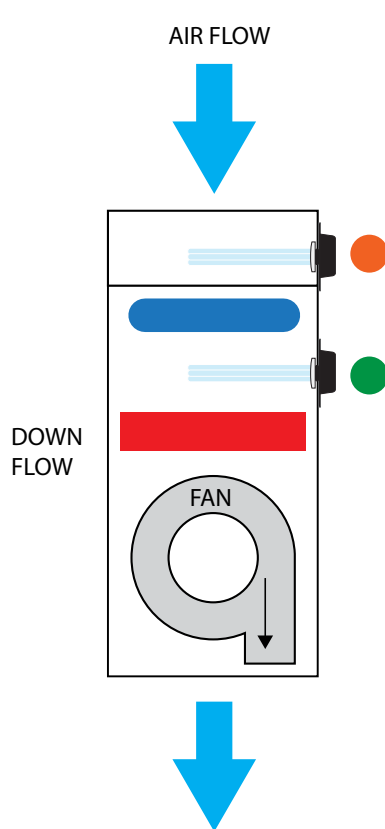
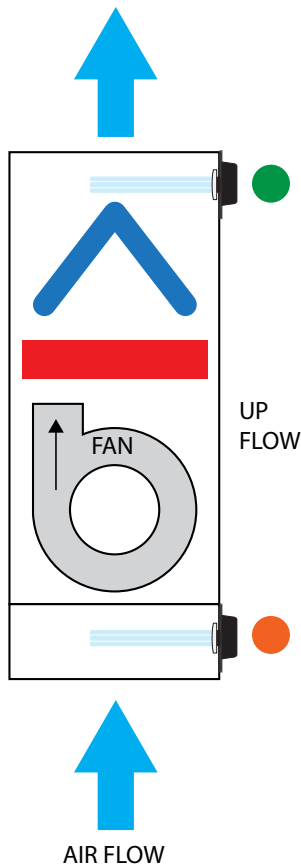
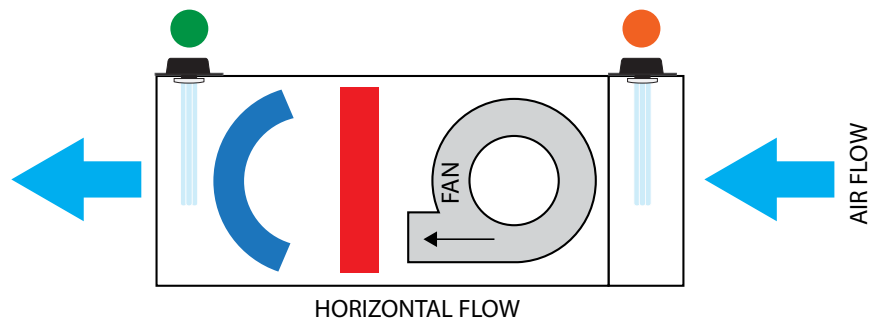
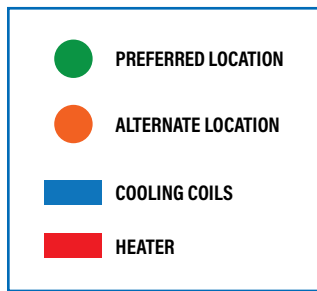
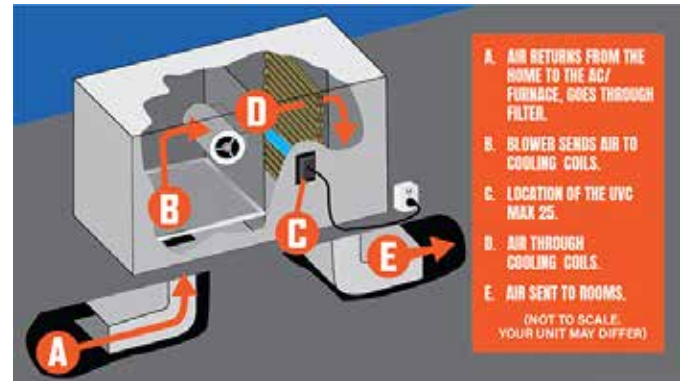
INSTALLING THE UVC MAX 25

Heating and Cooling configurations vary greatly. The best location for the UVC light is near the cooling coils, which can be Flat, Curved, or in the shape of an "V," "N" or "W". The best alternate location is in the return.

A FRAME COOLING COIL SAMPLE

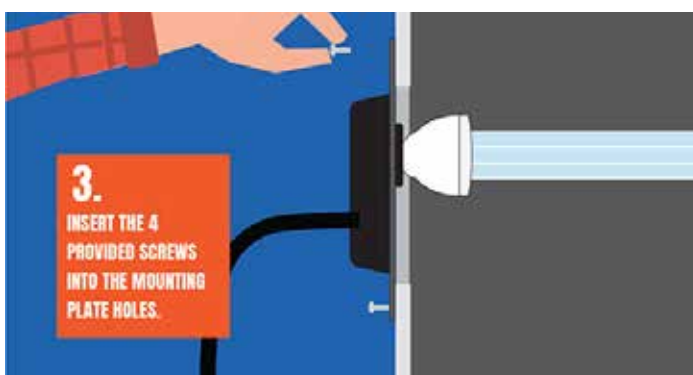
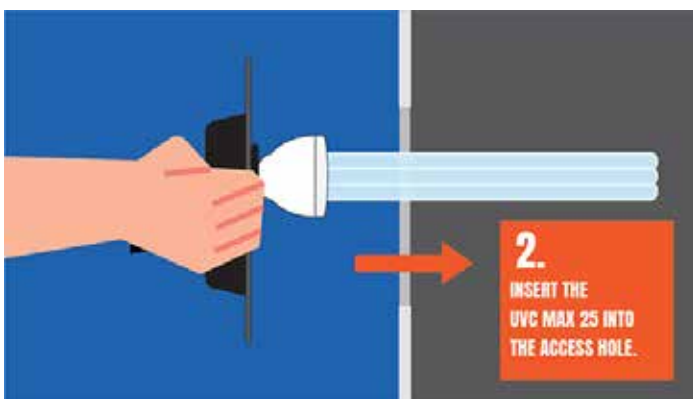
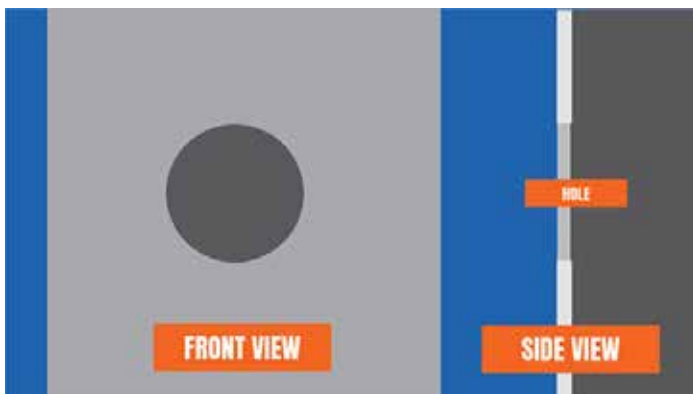
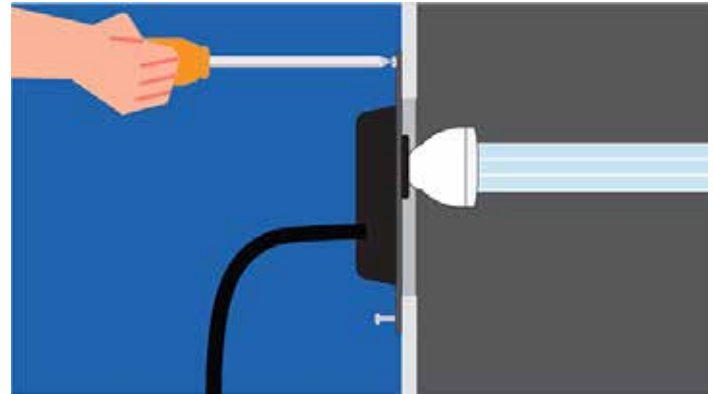
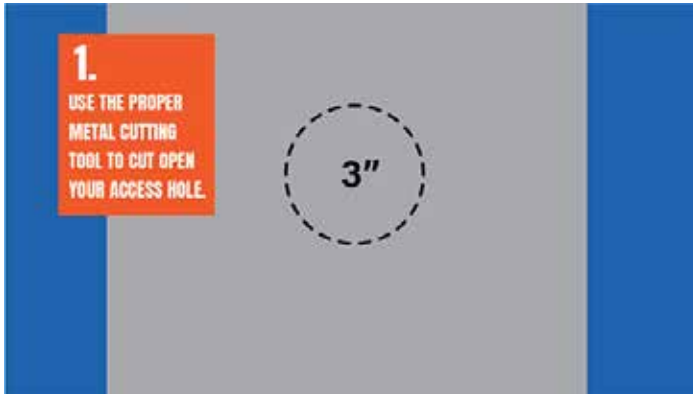


FLAT COOLING COIL SAMPLE



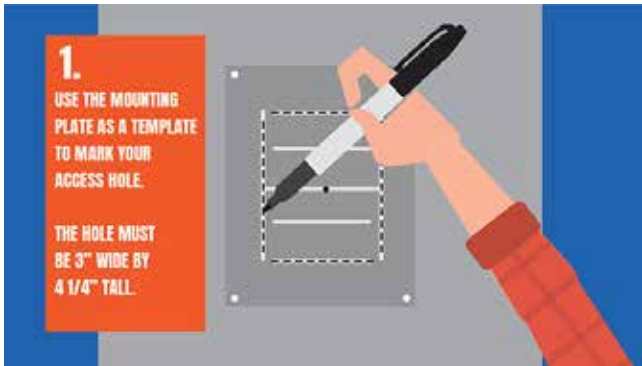
INSTALL: METAL DUCT

CAUTION: INVESTIGATE AND DETERMINE THE LOCATION OF THE A COIL PRIOR TO DRILLING HOLES IN DUCT FOR MOUNTING UNIT.

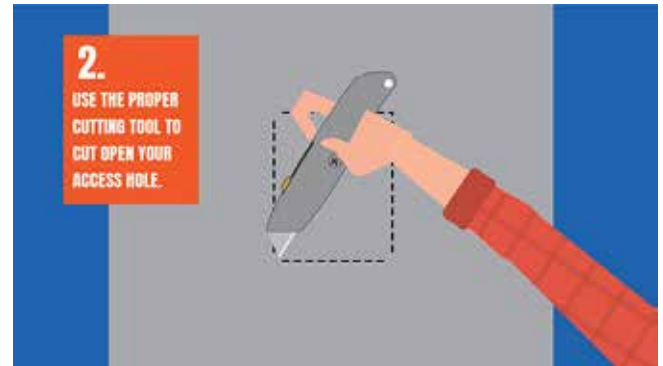


1. Locate a suitable location for the unit downstream of the coil in the supply plenum or in the return plenum; preferably downstream from the air filter. For optimum "cleaning" effect on the coil, mount the unit in the supply plenum as close as possible to the coil.
2. Drill Pilot Hole for Large Hole Cutter. (Figure 1)
3. Cut out the large opening using a drill and a 3 1/2" hole saw.
4. Attach Power Cord I Bulb Socket to Black ABS Plate.
5. Install bulb into socket. Do not handle the bulb with bare hands. Oils on the hands tend to shorten bulb life. (Figure 2)
6. Mount the Max 25 onto the plenum with the supplied self tapping sheet metal screws. (Figure 3)
7. Plug the power supply cord into a standard electric wall outlet for the 110 Volt Model or connect the thermostat wires to a 24 volt source that is always powered on in the Air Handler for the 24 volt Model*. Turn on the Max 25 Power Switch. Check bulb operation by looking through the view porthole. (Figure 4)
8. If the blue glow is not seen, make sure the base is properly installed onto the duct.
9. With metallic tape (or similar), seal all joints and seams of the plenum near the mounting location to reduce any direct viewing of light.

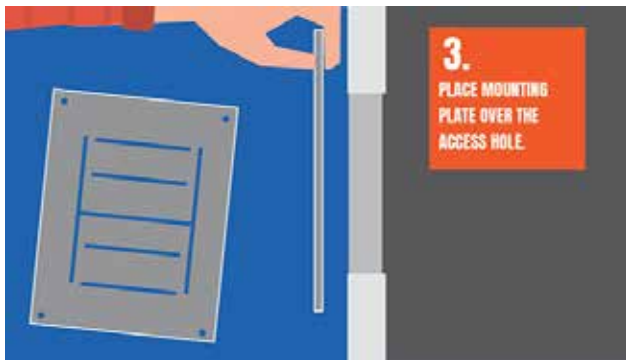
INSTALL: DUCT BOARD



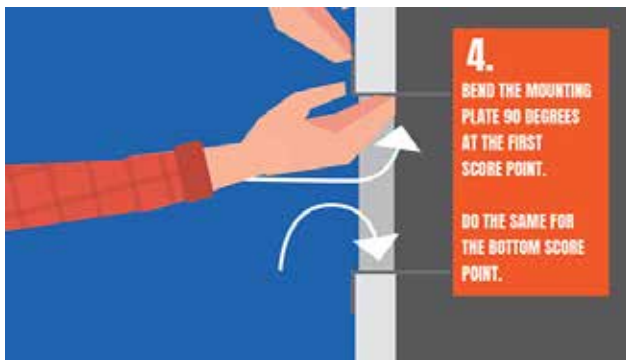
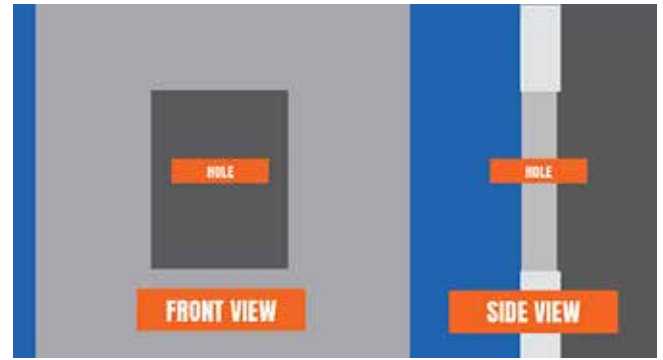
1 When the proper location for the UVC Max 25 has been selected, use the duct board mounting plate (5" x 7" overall) to draw lines where the duct board must be cut, 3" wide by 4-1/4" tall hole. (Figure 1)



2 Cut the rectangular hole and remove the loose piece of duct board. (Figure 2)



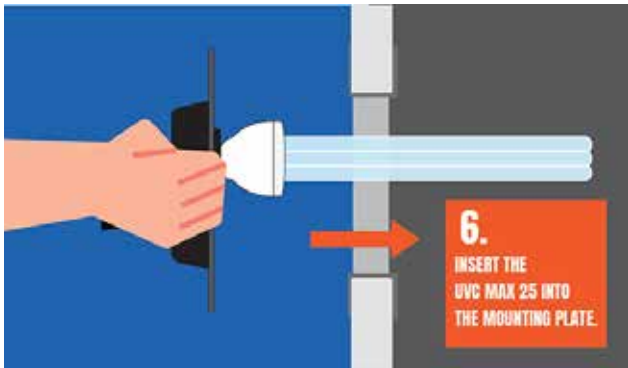
3 Place mounting plate over the access hole. (Figure 3)



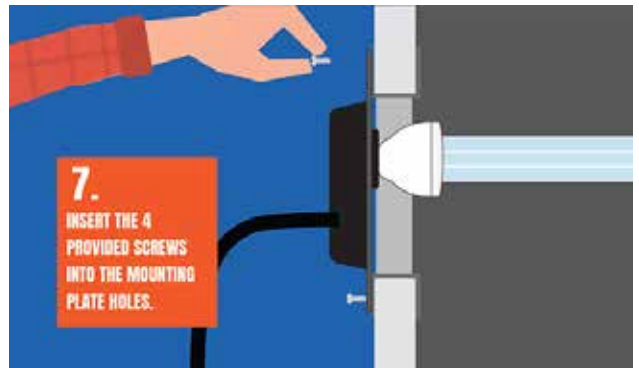
4 Now bend the mounting plate upper and lower tabs 90 degrees and with the rectangular opening in the plate closer to the top, insert it into the hole in the Duct Board. (Figure 4)



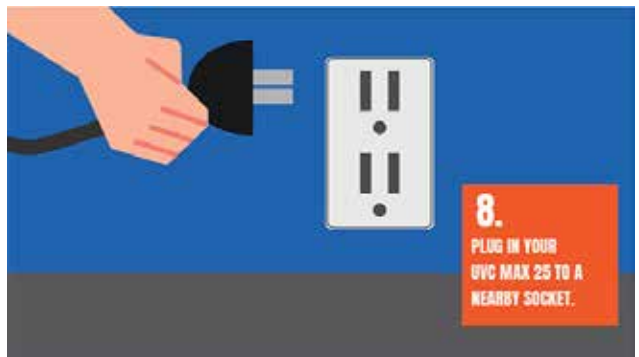
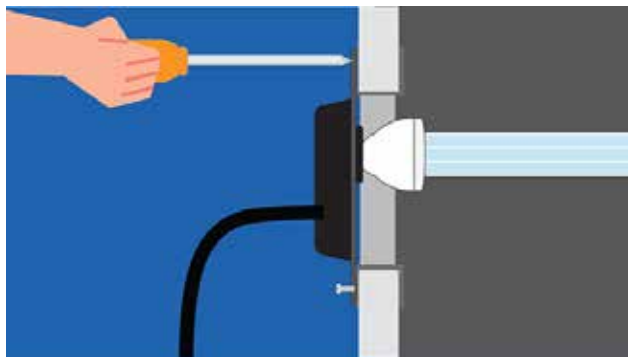
5 With the mounting plate in the opening, bend the secondary tabs another 90 degrees so that it is secured in the opening. (Figure 5)



6 The mounting plate is now ready for the UVC Max 25 to be installed in the same manner it would be installed into a metal duct. (Figure 6)



7 Place the provided screws into the pre-drilled holes and screw all 4 into place (Figure 7)



8 Plug in your UVC MAX 25. (Figure 8)

TROUBLESHOOTING GUIDE

1. MAKE SURE THE UNIT HAS POWER FROM THE WALL OUTLET FOR THE 120 VOLT VERSION OR FROM THE 24 VOLT CIRCUIT OF THE AIR HANDLER.
2. MAKE SURE THE SWITCH IS IN THE ON POSITION.
3. IF UNIT STILL DOES NOT LIGHT UP AFTER REPLACING BULB, REPLACE UNIT.

CLEAN-UP OF BROKEN BULBS

UVC bulbs contain a small amount of mercury, like a typical fluorescent bulb. **DO NOT TOUCH** any of the mercury with your bare hands.

1. While wearing disposable, non-absorbent protective gloves, pick up the large pieces of glass.
2. Then, vacuum the entire area with a standard household vacuum cleaner, ensuring the removal of all bulb material.
3. Dispose of the pieces of glass, the vacuum cleaner bag, and the disposable gloves in a sealed garbage bag .
4. Check with your local waste management authority for local disposal or recycling requirements.
5. Wash your hands. Then remove and wash clothes for added safety measures.